

Explaining Why Fake Photos are Fake: Does it Work?

Margie Ruffin, Gang Wang, Kirill Levchenko

The ACM international conference on
Supporting Group Work 2023



UNIVERSITY OF
ILLINOIS
URBANA - CHAMPAIGN

<https://mruffin.github.io>

Worries Grow That TikTok Is New Home for Manipulated Video and Photos

Misleading edits, fake news stories and deepfake images of politicians are starting to warp reality on the popular video platform.

 Give this article    88



Manipulated media is spreading before the midterms on TikTok, whose policies prohibit digital forgeries “that mislead users by distorting the truth.” Kiichiro Sato/Associated Press

Worries Grow That TikTok Is New Home for Manipulated Video and Photos

Misleading edits, fake news stories and deepfake images of politicians are starting to warp reality on the popular video platform.

Give this article



Manipulated media is spreading before the midterms on TikTok, whose policies prohibit digital forgeries “that mislead users by distorting the truth.” Kiichiro Sato/Associated Press

Photo of Joe Biden groping child is digitally altered

648 **Bill MCCARTHY, AFP USA**
Fri, December 30, 2022 at 3:48 PM CST · 2 min read

- f
- t
- m

Social media users are sharing an image that purports to show Joe Biden touching a child inappropriately below the waist. But the photo has been digitally manipulated; the original shows the child stretching a T-shirt out to show the US president, who points in return.

"Is this a photo of Biden fondling a small child's genitalia?" said far-right radio host Stew Peters, who has previously [spread](#) Covid-19 misinformation, in December 30, 2022 posts, [sharing](#) the [picture](#) to [Twitter](#), [Telegram](#) and [Truth Social](#).

The [same](#) image [spread](#) across [Twitter](#), [Facebook](#) and [other](#) social media [platforms](#), using [manipulated images](#) as part of a [baseless narrative](#) -- fueled by the QAnon conspiracy theory and, in some instances, [former president Donald Trump](#) -- suggesting inappropriate conduct by the US president.

But the photo has been altered to change the position of Biden's hands. A White House spokesperson confirmed to AFP that the version circulating online is "not real."



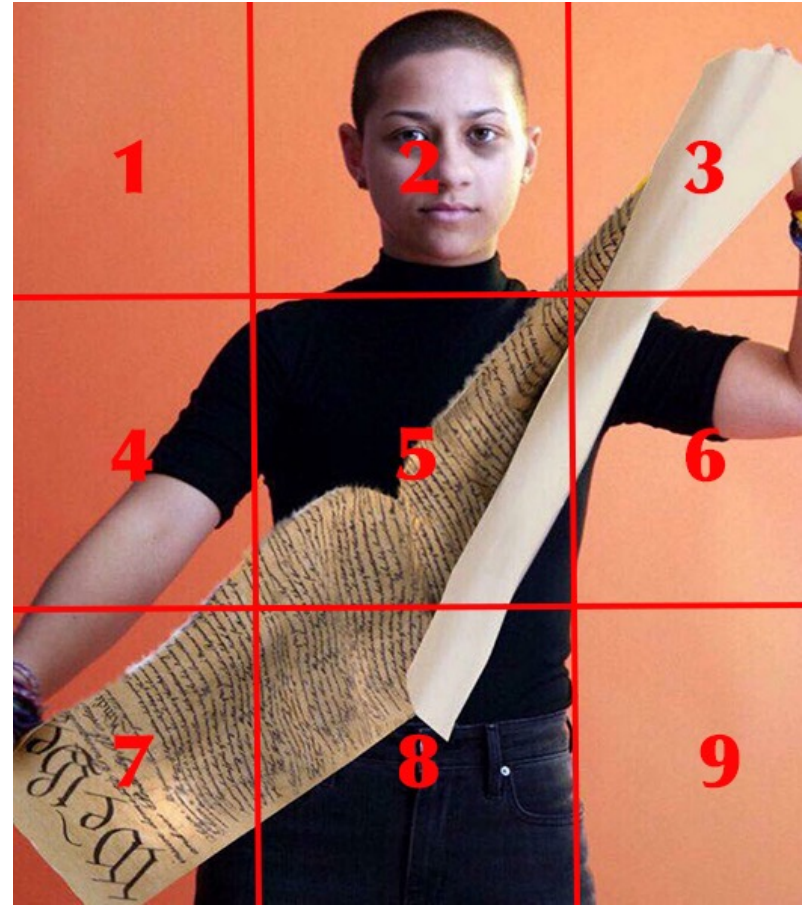
We Ask the Following Questions...

R1: Can viewers detect manipulated images?



We Ask the Following Questions...

R1: Can viewers detect manipulated images?



We Ask the Following Questions...

R1: Can viewers detect manipulated images?

R2: Are viewers' opinions influenced by manipulated images?



We Ask the Following Questions...

R1: Can viewers detect manipulated images?

R2: Are viewers' opinions influenced by manipulated images?

R3: Does explaining how an image has been altered protect against the effects of image manipulation?



This section has been modified from the original photo.

Original Section Shown Above

This section has been modified from the original photo.

Data Collection + Processing



Fact-checking Site



Image Datasets from Prior Work



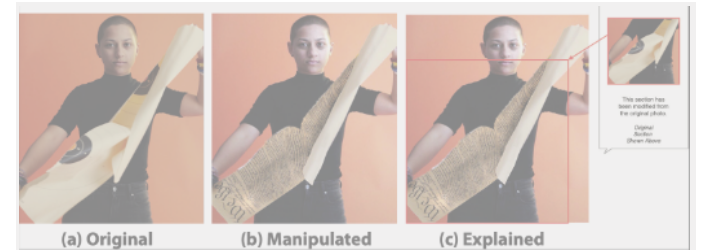
Social Media



R1
Detecting Manipulation
18 Image Sets



R2 & R3
Mitigating Manipulation
8 Image Sets



Data Collection + Processing



Snopes
Fact-checking Site

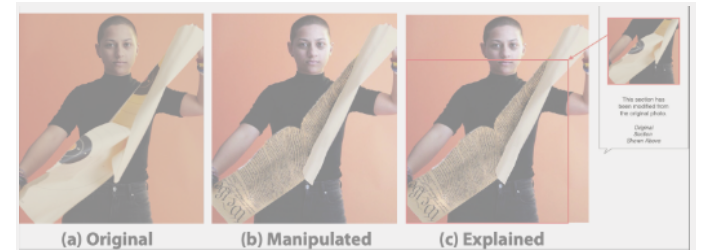
Image Datasets
from Prior Work

Social
Media

R1 Detecting Manipulation 18 Image Sets



R2 & R3 Mitigating Manipulation 8 Image Sets



Data Collection + Processing

Snopes
Fact-checking Site

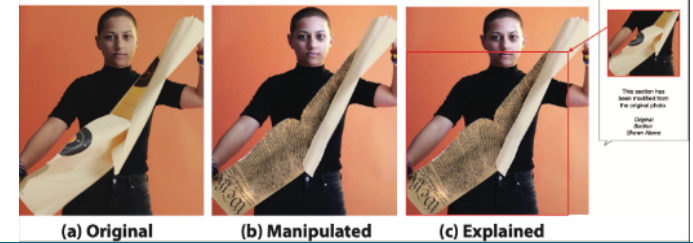
Image Datasets
from Prior Work

Social Media

R1 Detecting Manipulation 18 Image Sets



R2 & R3 Mitigating Manipulation 8 Image Sets



Presentation Overview




**Detecting
Manipulation
Survey**

**Mitigating
Manipulation
Survey**

**Summary of
Findings**

Presentation Overview



**Detecting
Manipulation
Survey**



**Mitigating
Manipulation
Survey**



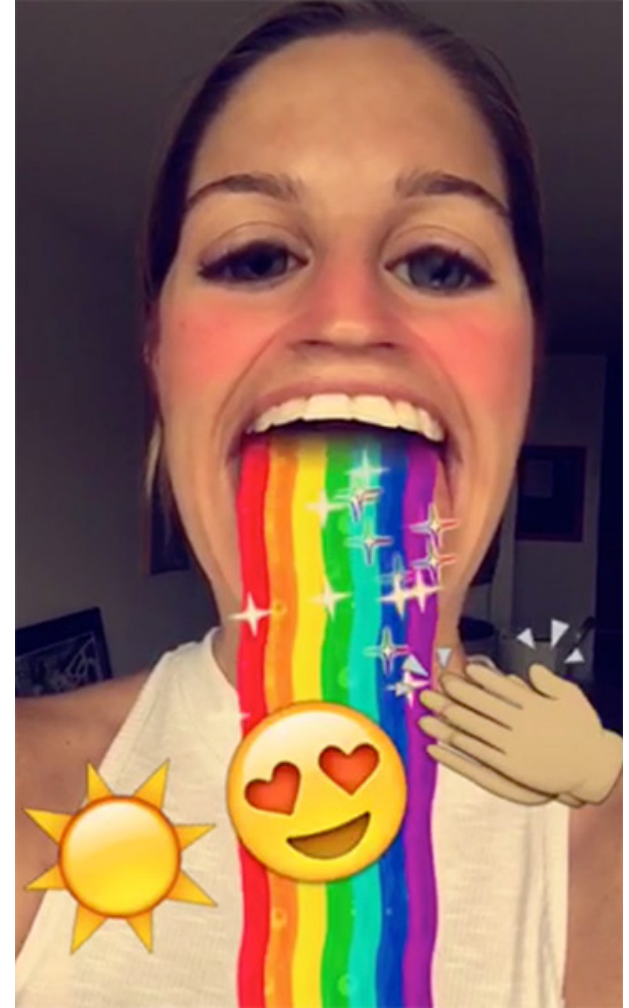
**Summary of
Findings**

Detecting Manipulation

- 3 batches of survey w/ different images
 - Collected 18 image sets (original and manipulated)
 - Dataset split into 3 batches of 6 image sets

Detecting Manipulation

- 3 batches of survey w/ different images
 - Collected 18 image sets (original and manipulated)
 - Dataset split into 3 batches of 6 image sets
- Each participant was shown
 - 6 images, 3 manipulated & 3 original
 - 1 control image



Detecting Manipulation

- 3 batches of survey w/ different images
 - Collected 18 image sets (original and manipulated)
 - Dataset split into 3 batches of 6 image sets
- Each participant was shown
 - 6 images, 3 manipulated & 3 original
 - 1 control image
- Participants were asked to detect and locate manipulation



Does this photo appear digitally manipulated?

- Yes
- No
- I'm not sure



Does this photo appear digitally manipulated?

- Yes
- No
- I'm not sure



In which region is the alteration? Select all that apply.

- 1
- 2
- 3
- 4
- 5
- 6
- 7
- 8
- 9
- I don't think it's manipulated or I'm not sure



Does this photo appear digitally manipulated?

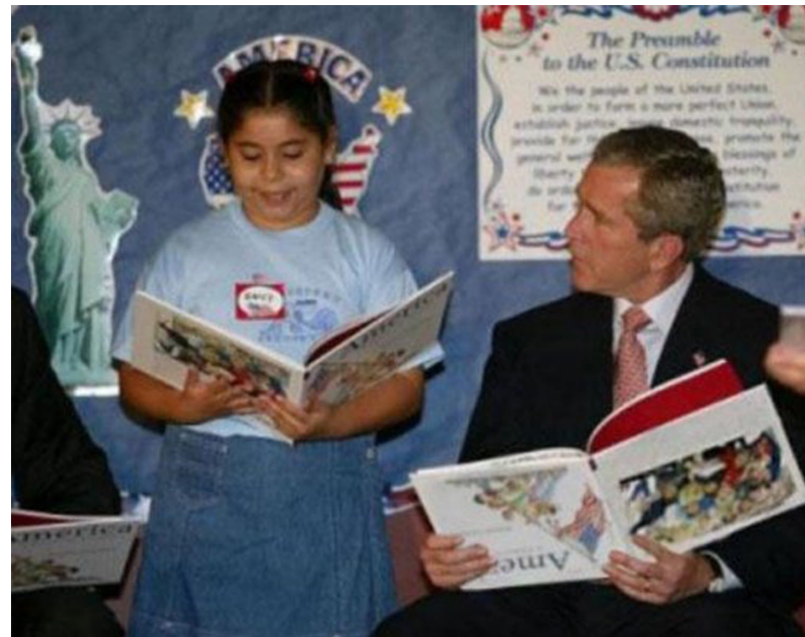
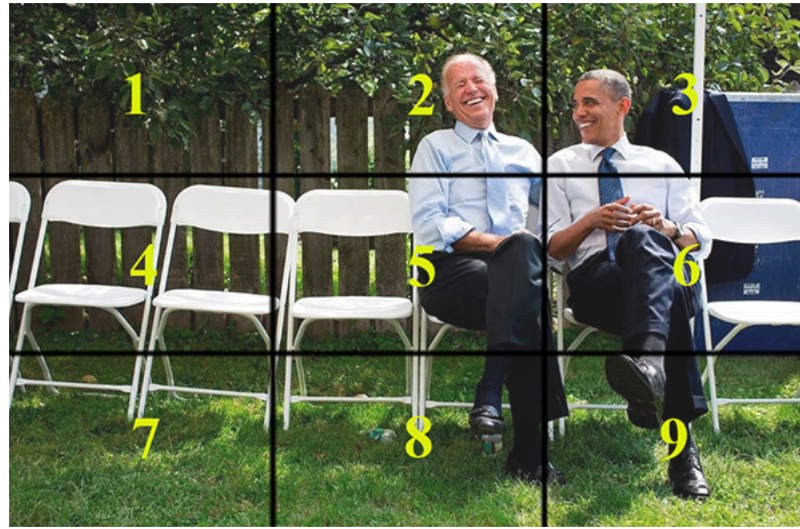
- Yes
- No
- I'm not sure

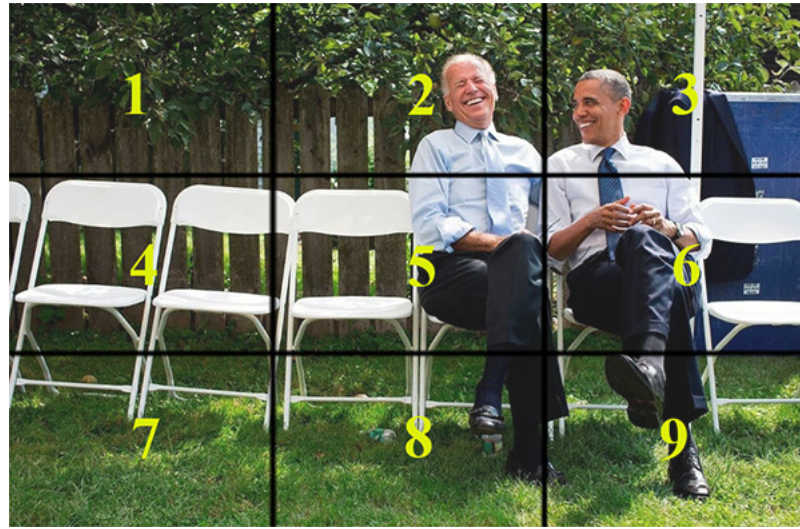


In which region is the alteration? Select all that apply.

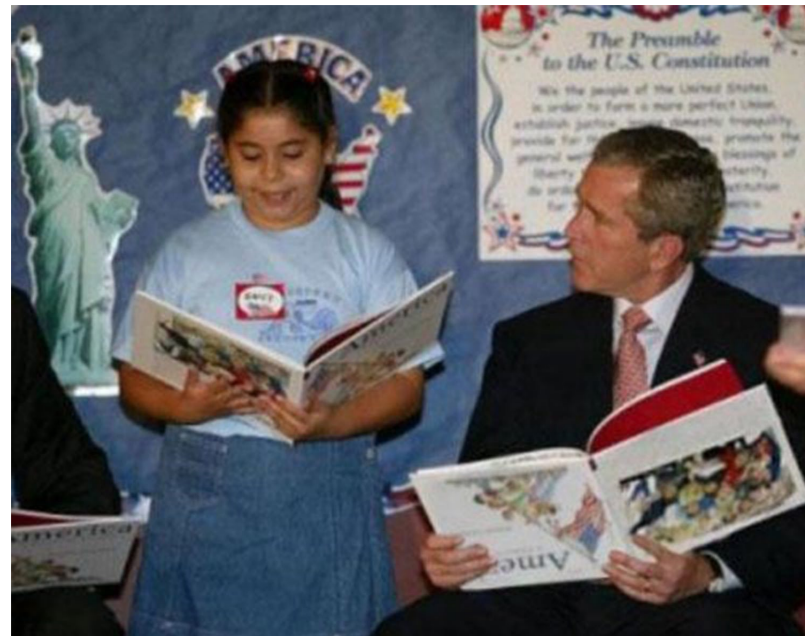
- 1
- 2
- 3
- 4
- 5
- 6
- 7
- 8
- 9

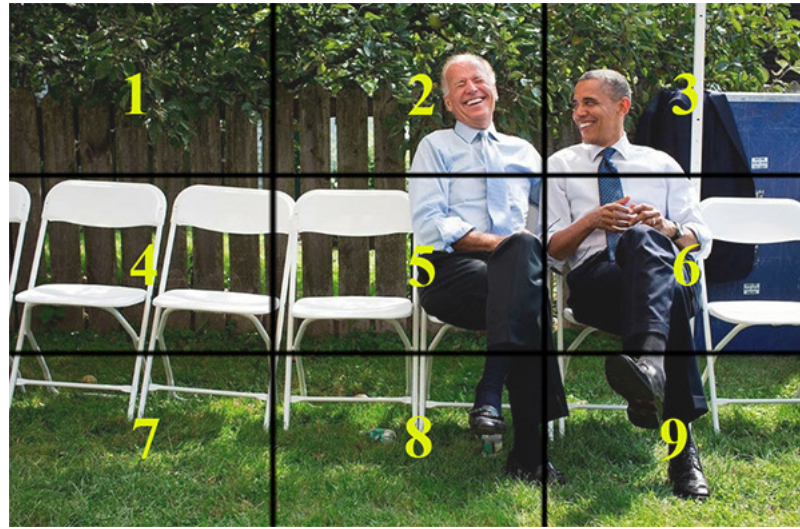
I don't think it's manipulated or I'm not sure





Answer: Not Manipulated

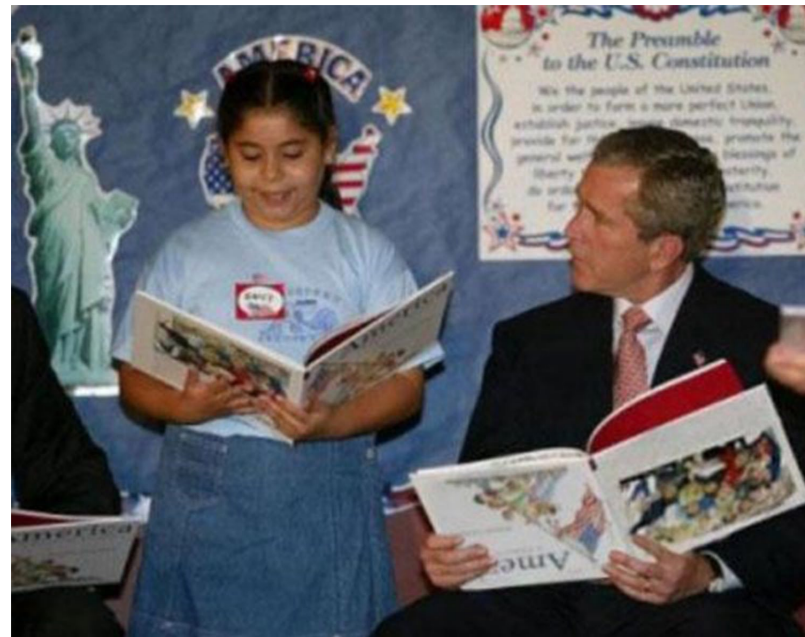




Answer: Not Manipulated



Answer: Manipulated



Are people good at it?

Manipulated Image?

		Yes	No
Users' Answers	Yes	241	150
	No	98	189

Identification Precision = 62%

Identification Recall = 71%

Identification Accuracy

60%

mean accuracy

Location Accuracy

38%

mean accuracy

Presentation Overview



Detecting
Manipulation
Survey



Mitigating
Manipulation
Survey



Summary of
Findings

Mitigating Manipulation

- 3 Survey Groups
 - Original
 - Manipulated
 - Explained

Original



Participants are shown
original images

Original

Manipulated



Participants are shown original images

Participants are shown manipulated versions of the images

Original



Participants are shown original images

Manipulated



Participants are shown manipulated versions of the images

Explained



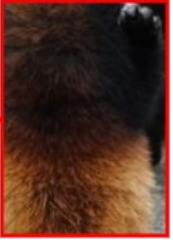
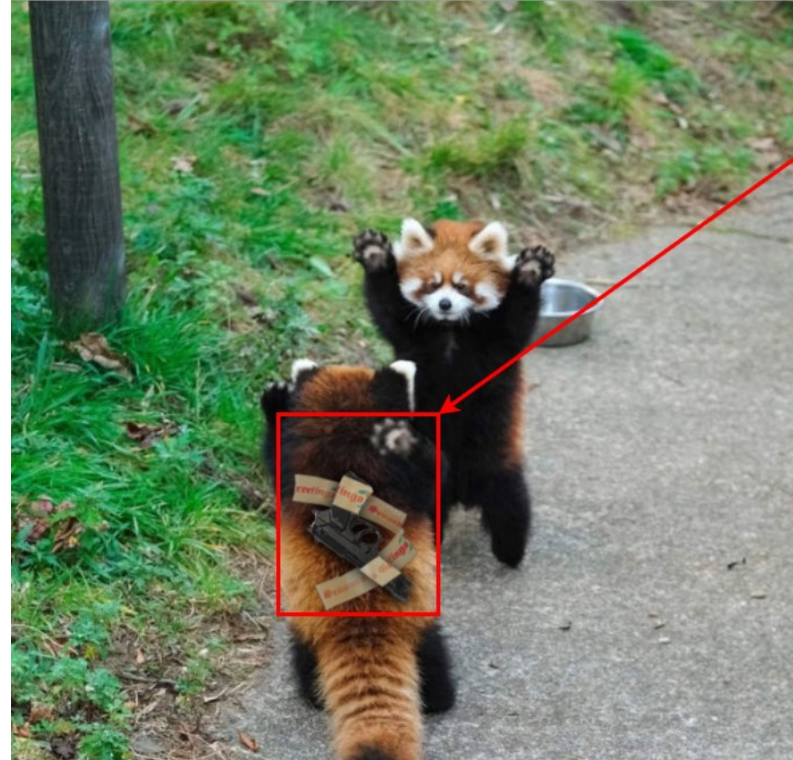
The appearance of clothing has been modified from the original photo.

Original Section Shown Above

Participants are shown an image explaining how the manipulated image was produced

Mitigating Manipulation

- 3 Survey Groups
 - Original
 - Manipulated
 - Explained
- Each participant was shown
 - 4 images out of our 8 image sets
 - 1 control image



This is a control image

Original Section Shown Above

Mitigating Manipulation

- 3 Survey Groups
 - Original
 - Manipulated
 - Explained
- Each participant was shown
 - 4 images out of our 8 sets
 - 1 control image
- Each image was shown with a caption
 - Caption identifies the person or people pictured
 - Same caption used across images in set

Notable Survey Questions

Q1: Message Agreement

Do you believe that Democratic lawmakers—Ilhan Omar of Minnesota, Alexandria Ocasio-Cortez of New York, Rashida Tlaib of Michigan, and Ayanna Pressley of Massachusetts, also known as The Squad—hold extreme views?



Notable Survey Questions

Q1: Message Agreement

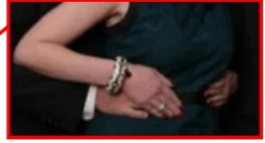
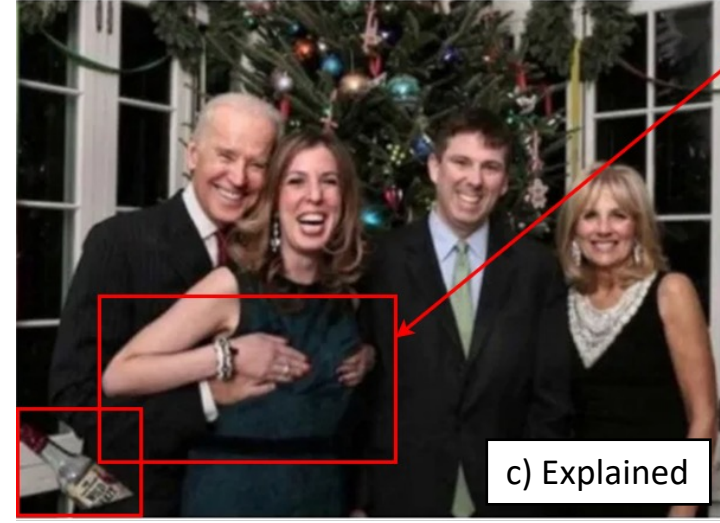
Do you believe that Democratic lawmakers—Ilhan Omar of Minnesota, Alexandria Ocasio-Cortez of New York, Rashida Tlaib of Michigan, and Ayanna Pressley of Massachusetts, also known as The Squad—hold extreme views?

Q2: Subject Sentiment

From negative to positive, what is your opinion of the person(s) in this photo?



Do Explanations Work?



The appearance of Joseph Biden and Amy Parnes have been modified from the original photo.

Original Section Shown Above

Do you believe United States President Joe Biden inappropriately touches women?

From negative to positive, what is your opinion of United States President Joe Biden in this photo?

Message Agreement		
Variable	β	p
Image (Reference = Manipulated)		
Original	-0.20	0.28
Explained	-0.57	0.01**

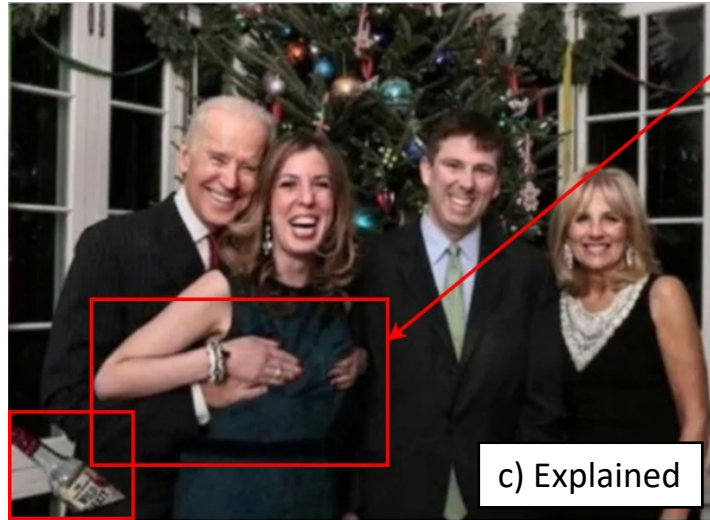
Subject Sentiment		
Variable	β	p
Image (Reference = Manipulated)		
Original	0.03	0.86
Explained	-0.53	0.01**



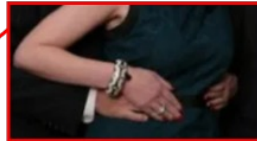
a) Original



b) Manipulated



c) Explained



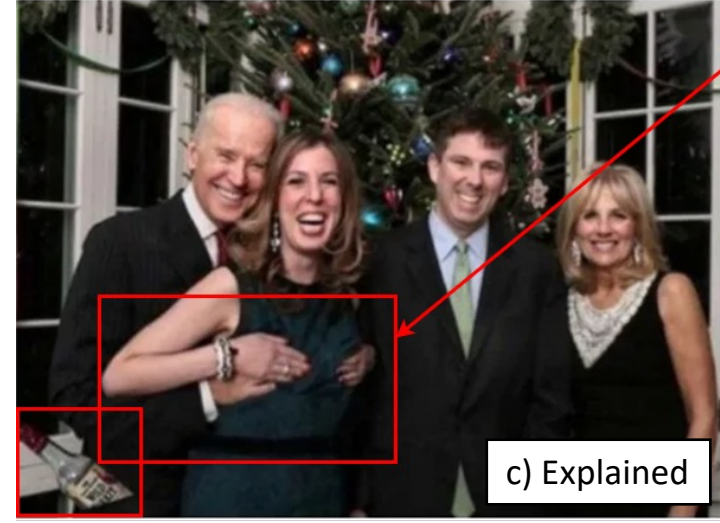
The appearance of Joseph Biden and Amy Parnes have been modified from the original photo.

Original Section Shown Above

Do you believe United States President Joe Biden inappropriately touches women?

Message Agreement		
Variable	β	p
Image (Reference = Manipulated)		
Original	-0.20	0.28
Explained	-0.57	0.01**

Viewers who saw Explained image were **LESS AGREEING** with the above statement.



The appearance of Joseph Biden and Amy Parnes have been modified from the original photo.

Original Section Shown Above

Do y

However, those who saw the Explained image held a stronger **NEGATIVE** feeling about the subject.

Explained	-0.57	0.01**
-----------	-------	--------

From negative to positive, what is your opinion of United States President Joe Biden in this photo?

Subject Sentiment		
Variable	β	p
Image (Reference = Manipulated)		
Original	0.03	0.86
Explained	-0.53	0.01**



The head of Jeffrey Epstein has been added to the original photo.

Original Section Shown Above

Do you believe that actor Jim Varney may be guilty of the sex trafficking of minors?

From negative to positive, what is your opinion of the person on the left in this photo?

Message Agreement		
Variable	β	p
Image (Reference = Manipulated)		
Original	-0.44	0.02*
Explained	-0.58	0.01**

Subject Sentiment		
Variable	β	p
Image (Reference = Manipulated)		
Original	0.21	0.10
Explained	-0.40	0.01**



The appearance of clothing has been modified from the original photo.

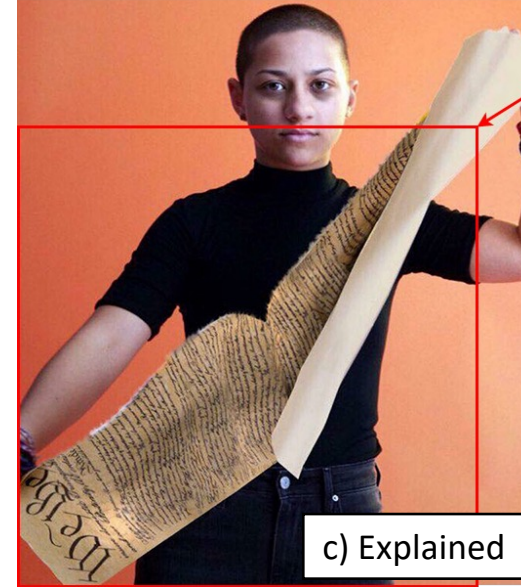
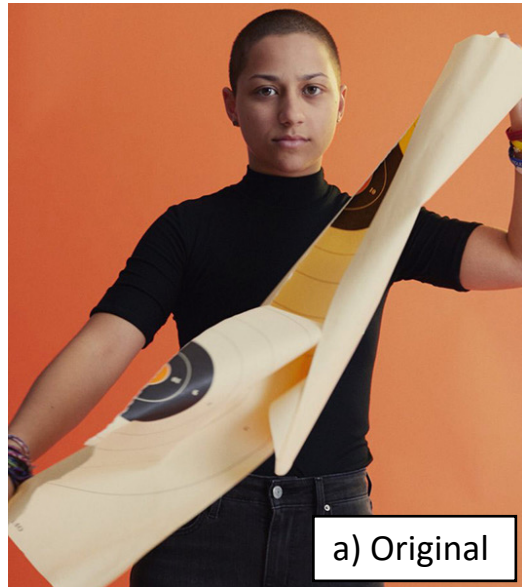
Original Section Shown Above

Do you believe that Democratic lawmakers ... known as the squad, hold extreme views?

From negative to positive, what is your opinion of the person(s) in this photo?

Message Agreement		
Variable	β	p
Image (Reference = Manipulated)		
Original	0.12	0.53
Explained	-0.09	0.60

Subject Sentiment		
Variable	β	p
Image (Reference = Manipulated)		
Original	-0.06	0.64
Explained	-0.27	0.03*



This section has been modified from the original photo.

Original Section Shown Above

Do you believe that those who campaign against guns do not respect the Constitution of the United States?

From negative to positive, what is your opinion of the person in this photo?

Message Agreement		
Variable	β	p
Image (Reference = Manipulated)		
Original	-0.62	0.01**
Explained	-0.44	0.02*

Subject Sentiment		
Variable	β	p
Image (Reference = Manipulated)		
Original	0.20	0.14
Explained	0.01	0.93

Presentation Overview



Detecting
Manipulation
Survey

Mitigating
Manipulation
Survey

**Summary of
Findings**

Embracing the Expected and Unexpected

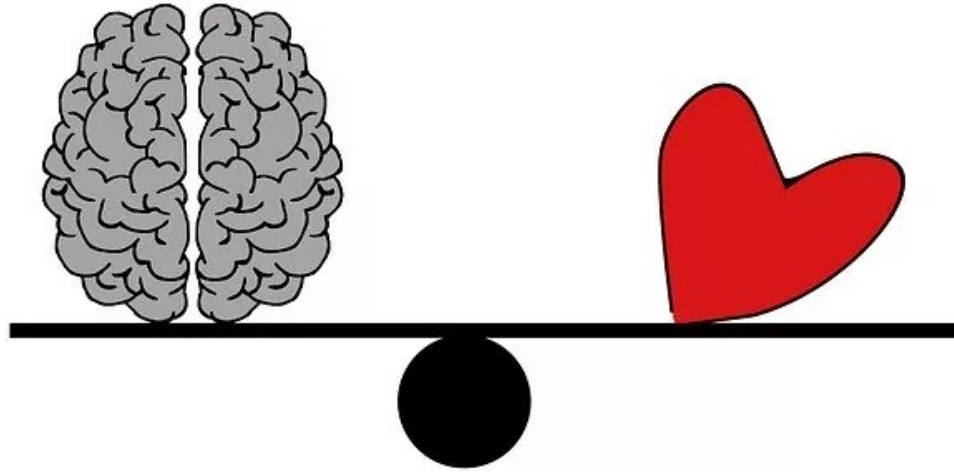
Detecting and Locating Manipulation

- Confirmed prior research:
Users are not effective at determining whether an image was manipulated or not

They are even worse when it comes to locating the manipulation

Attempting to Mitigate Manipulation

- Attempting to explain the effect of misinformation is trickier than we thought
- Showing a manipulated image with an explanation may still produce its intended negative effect



System 2: Slow

Conscious Reasoning | Slow | Effortful

Message Agreement Questions invoked
critical thinking

System 1: Fast

Subconscious Emotion | Impulsive

Sentiment Questions invoked ***feelings***

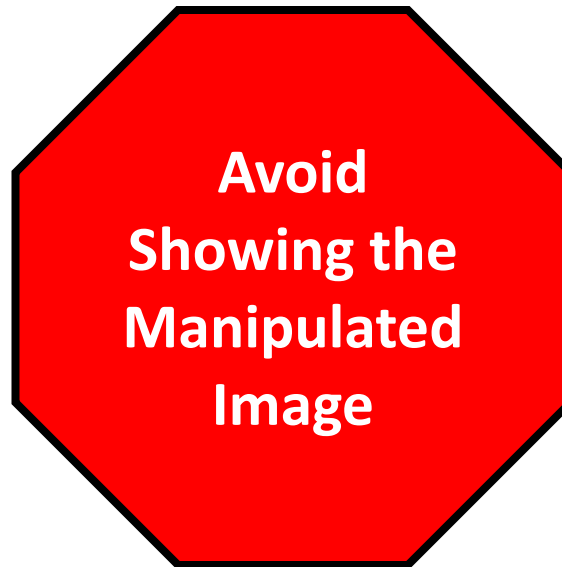
Exploration Question:

Can we counteract the influence of manipulated images more effectively by nudging users to perform more deliberate thinking and reasoning? If so, how to facilitate this process?

What does all this mean?

Attempting to explain how an image was manipulated should be done with caution

Showing a manipulated image, even in the context of an explanation, may still produce a negative effect



Thank You!



Summary:

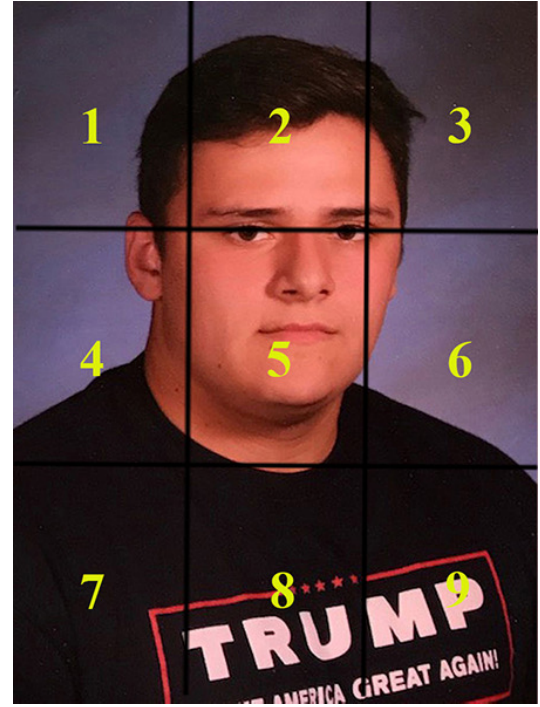
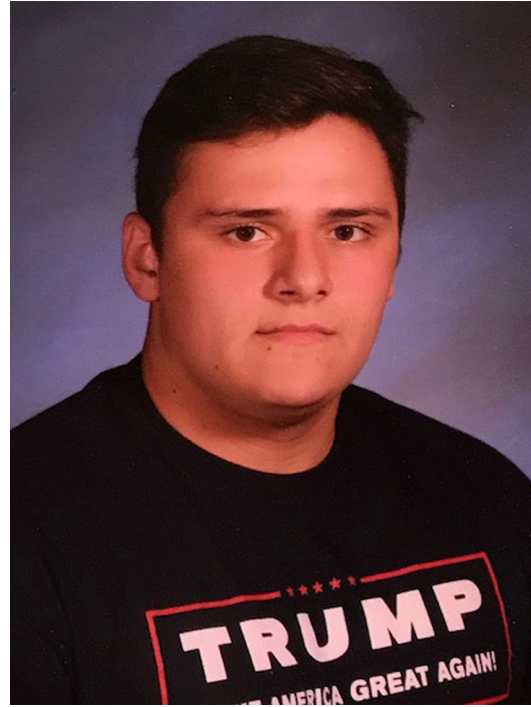
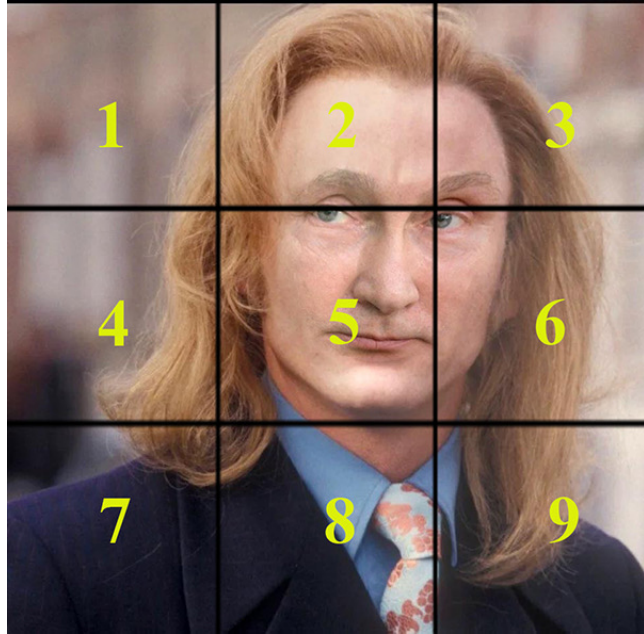
- Users generally are not good at identifying manipulated images
 - They are even worse at locating the manipulated regions
- Simply highlighting and explaining the manipulation to users was not always effective
- Highlighting and explanation led viewers to hold less favorable opinions about the subjects pictured

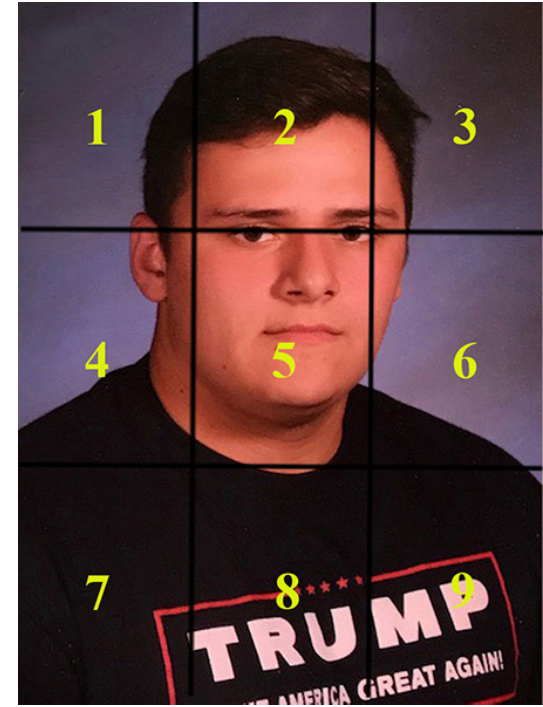
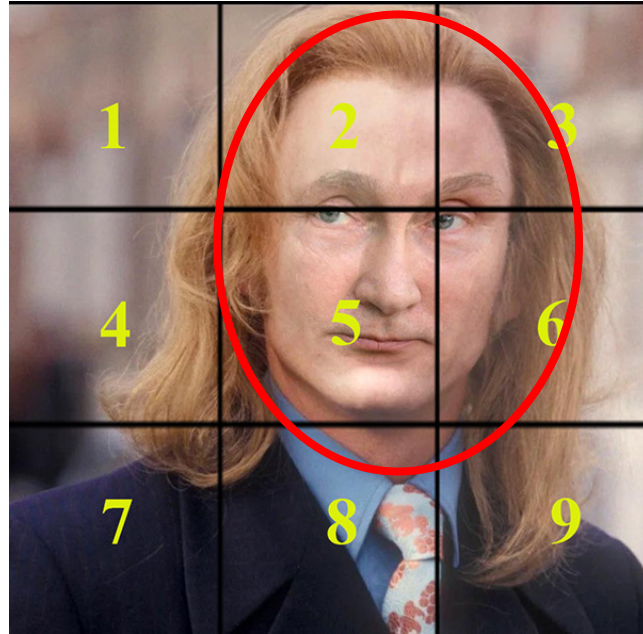
Thank You

Attributes	Survey 1	Survey 2			
	Total	Original	Manipulated	Explained	Total
Gender					
Male	76	114	115	111	340
Female	37	58	71	68	197
Other	0	1	4	1	6
Age					
Under 18	0	0	0	0	0
18-24	9	17	16	4	37
25-34	16	83	83	69	235
35-44	7	46	57	62	165
45-54	62	15	6	20	41
55-64	19	9	17	18	44
65+	0	2	1	7	10
Not Disclosed	0	1	0	0	1
Education					
< High school	0	2	0	0	2
High school	5	12	8	15	35
Some college	54	12	9	9	30
Associate	30	9	15	10	34
Bachelor	13	114	118	117	349
Graduate	9	22	40	29	91
Not Disclosed	2	2	0	0	2
Total	113	173	190	180	543

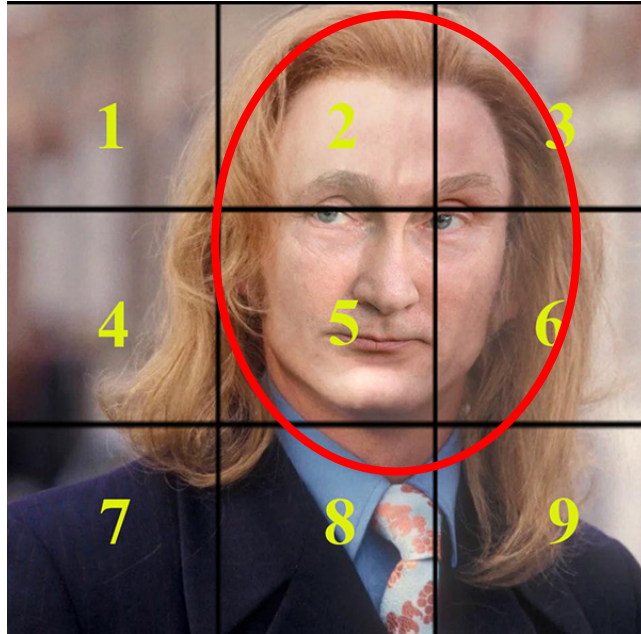
Table 1. Demographics— We show the demographics information of participants of Survey 1 (Detecting Manipulation) and Survey 2 (Mitigating Manipulation).

Detecting Manipulation Examples

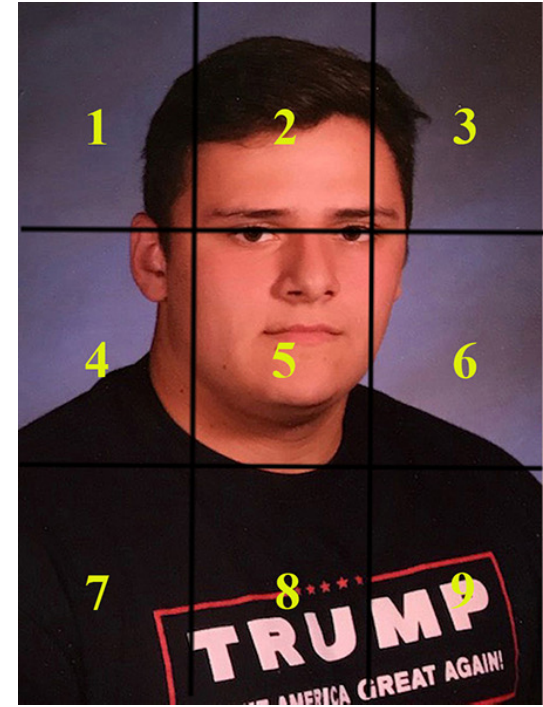
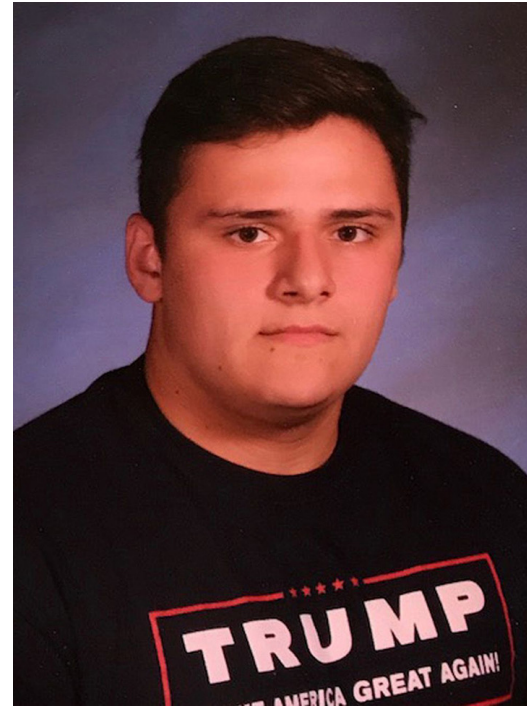




**Answer:
Manipulated**

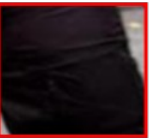


**Answer:
Manipulated**



**Answer:
Not Manipulated**

Mitigating Manipulation Examples



The Antifa symbol has been added to the original photo.

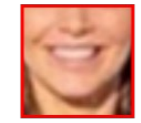
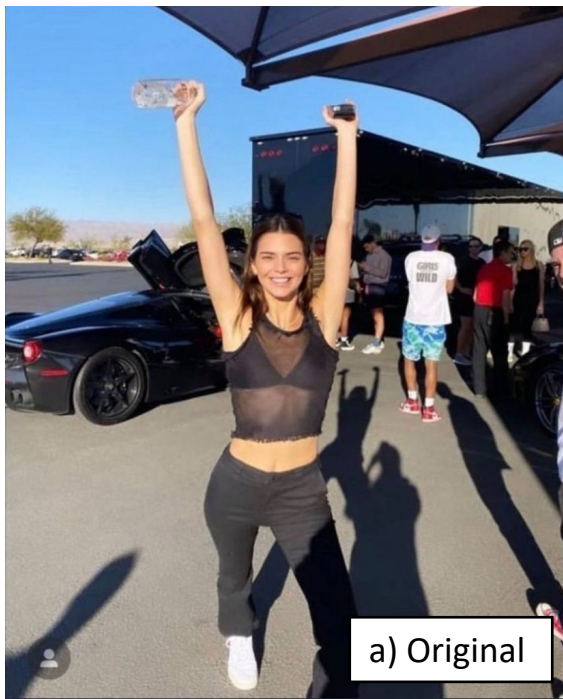
Original Section Shown Above

Do you believe Antifa protesters are violent?

From negative to positive, what is your opinion of the person assaulting law enforcement in this photo?

Message Agreement		
Variable	β	p
Image (Reference = Manipulated)		
Original	-0.19	0.26
Explained	-0.25	0.14

Subject Sentiment		
Variable	β	p
Image (Reference = Manipulated)		
Original	-0.20	0.22
Explained	0.13	0.42



A sign and mask have been added to the original photo.

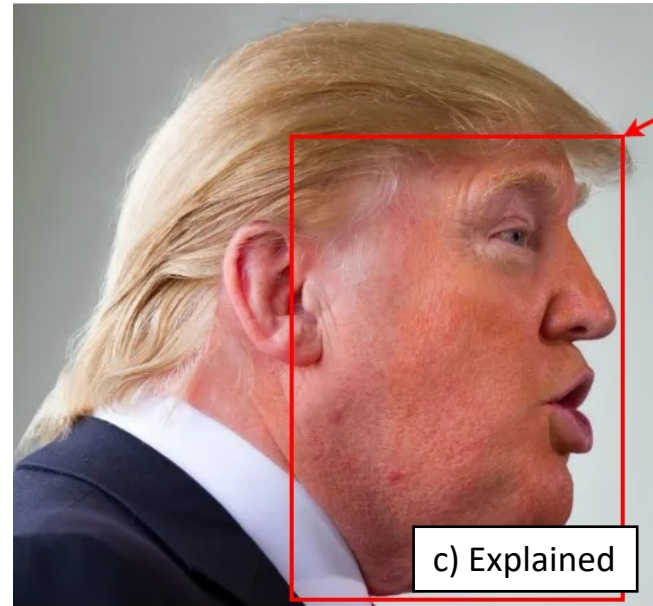
Original Section Shown Above

Do you believe that Kendall Jenner supports wearing protective face masks and supports the Black Lives Matter Movement?

From negative to positive, what is your opinion of the person in this photo?

Message Agreement		
Variable	β	p
Image (Reference = Manipulated)		
Original	-0.50	0.001***
Explained	-0.15	0.31

Subject Sentiment		
Variable	β	p
Image (Reference = Manipulated)		
Original	-0.02	0.90
Explained	-0.21	0.10



The appearance of Donald Trump's face has been modified from the original photo.

Original Section Shown Above

Do you believe that former United States President Donald Trump is an unattractive person?

From negative to positive, what is your opinion of the person in this photo?

Message Agreement		
Variable	β	p
Image (Reference = Manipulated)		
Original	-0.04	0.85
Explained	-0.08	0.65

Subject Sentiment		
Variable	β	p
Image (Reference = Manipulated)		
Original	0.17	0.30
Explained	-0.08	0.62



The appearance of Donald Trump has been modified from the original.

Original Section Shown Above